

For wall, floor or ceiling mounting

- **Short adjacent zone.**
- **Stable and rigid construction.**
- **Maintenance free.**
- **Suitable for ceiling mounting.**
- **Test nipple for measuring air flow rate.**
- **Adjustable adjacent zone**



Function

PAC/PAR supply air panel is designed to handle large air volumes. The panels provide a displacement ventilation system giving improved air quality and lower temperatures in the occupied zone than with traditional systems. The panel has a rigid construction with a profiled front.

The internal REPUS[®]-nozzles provide a constant air distribution over the entire face area without risk of draught. As no filter or foam media is used in manufacture the panel is maintenance free with no risk of clogging.

The panel is equipped with a test point for measuring air flow rates.

The panel is equipped with an adjustable adjacent zone.

Design

The panels are manufactured from galvanised sheet steel.

Front thickness 1 mm.

Standard finish is white (RAL9010).

Suitable for wall, floor or ceiling mounting.

Accessories

Duct cover plate

Base

Applications

Industrial premises, printing works, kitchens, laboratories etc. requiring high air flows.

Specials

Stainless steel.

Other RAL colours.

Alternative sizes.

Reinforced front

Alternative duct positions.

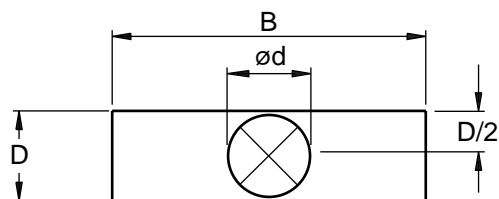
The REPUS[®] design system has been used to build special units for many years and hundreds of successful installations have been carried out. We have developed the method to quickly and accurately calculate all necessary data for specials.

Please contact us for more information.

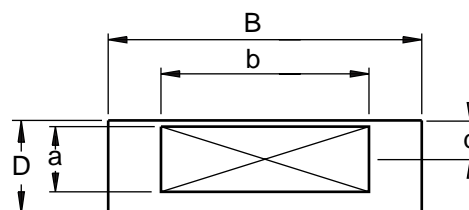
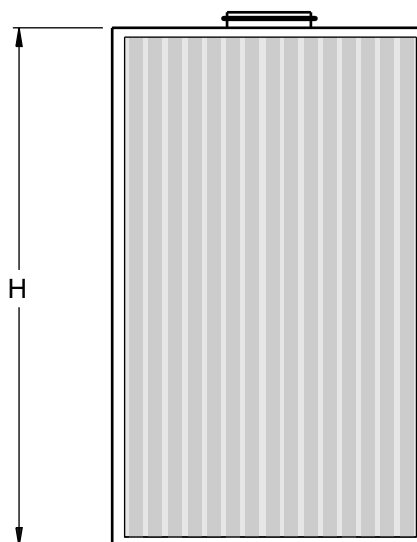
Technical data

Pressure drops, sound data and adjacent zone are given in the diagrams. Sound levels are shown at 10 m² Sabine.

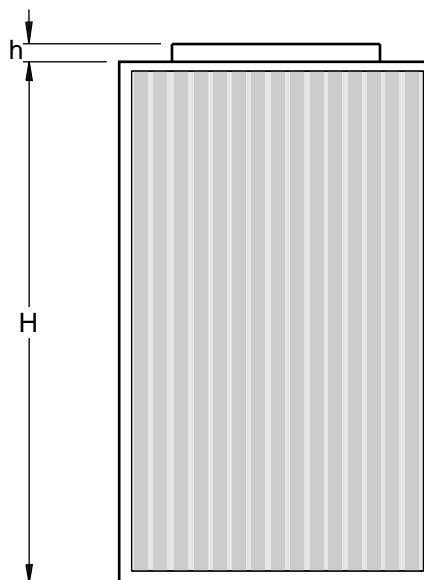
Dimensions and weights



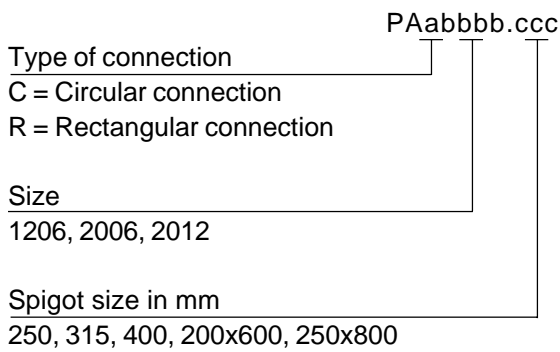
Size	ø d	H	B	D	kg
PAC 1206	250	1195	595	350	20
PAC 2006	315	2000	595	350	25
PAC 2012	315	2000	1195	350	60
PAC 2012	400	2000	1195	450	65



Size	a	b	H	B	D	h	d	kg
PAR 2012	200	600	2000	1195	220	100	110	50
PAR 2012	250	800	2000	1195	350	200	150	60



Product code



Accessories



- Fittings for wall mounting
- Fittings for ceiling mounting
- Frame for false ceilings.
- On stainless steel units, facilities for washing internally.

Descriptive text

REPUS[®] supply air panel.

Type.....

The panel must be equipped with REPUS[®] nozzles for internal air distribution.

Material: Galvanised sheet steel

Paint: White (RAL 9010)

Accessories:

Commissioning

A test nipple is fitted to the Displacement Panel for measuring the internal pressure.

Connect a suitable measuring device to the test nipple with a flexible hose and then adjust the inlet damper to provide a pressure as indicated on the attached diagram.

Please note that this is not the total pressure shown on the main leaflet.

Maintenance

The panel is designed for ease of maintenance. The front is dismantable if cleaning is necessary. To clean the panel use a damp cloth and a mild detergent.

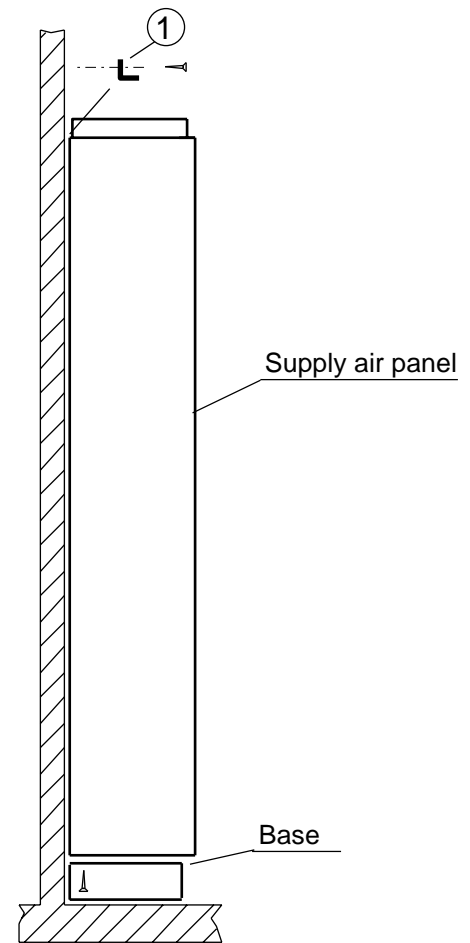
Installation

The panels are suitable for mounting on walls, floors or suspended from the ceiling.

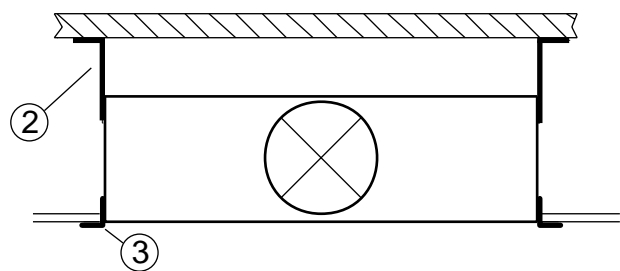
For wall mounting use fitting set type 1. These are fixed between the top of the terminal and the wall.

For mounting below ceilings, use standard suspensions or our accessories. Type 2.

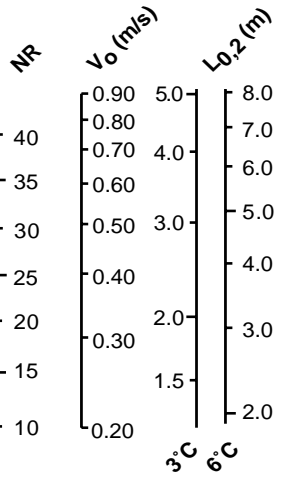
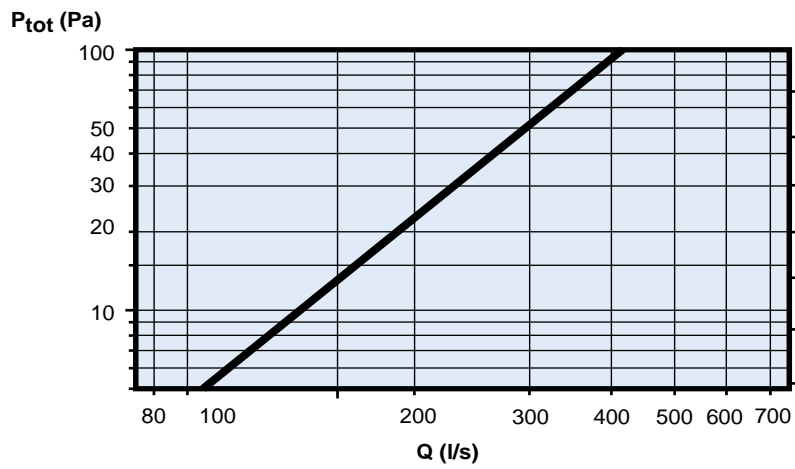
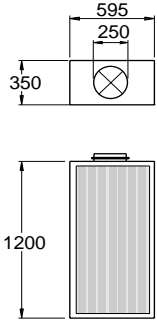
When mounted in a false ceiling, a cover can be provided to hide the gap between the Repus panel and the false ceiling. Type 3.



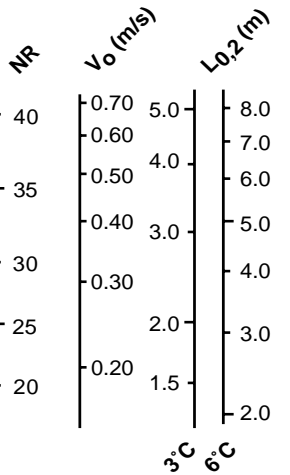
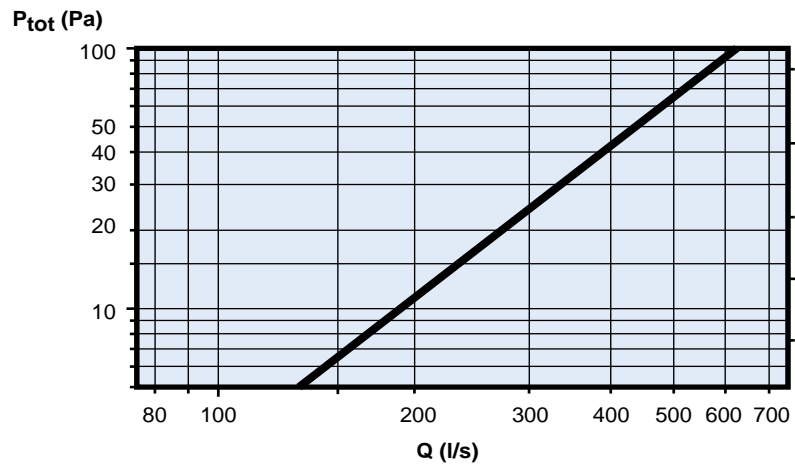
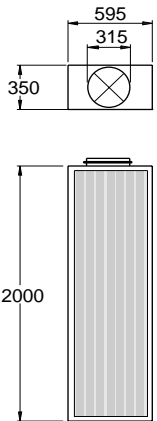
Ceiling mounted



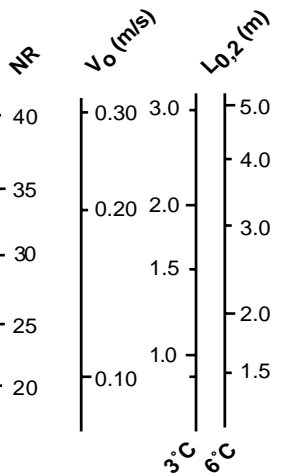
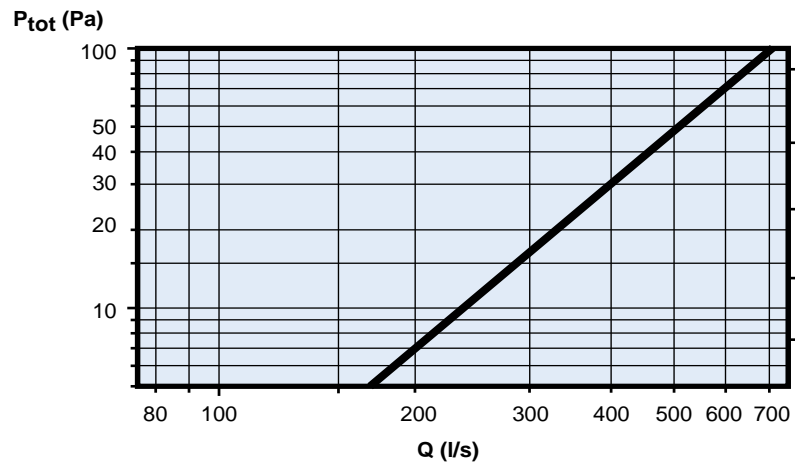
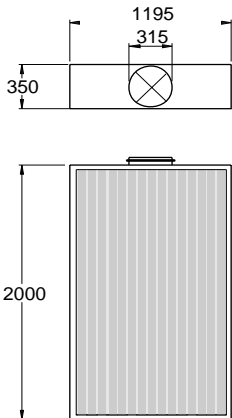
PAC 1206.250



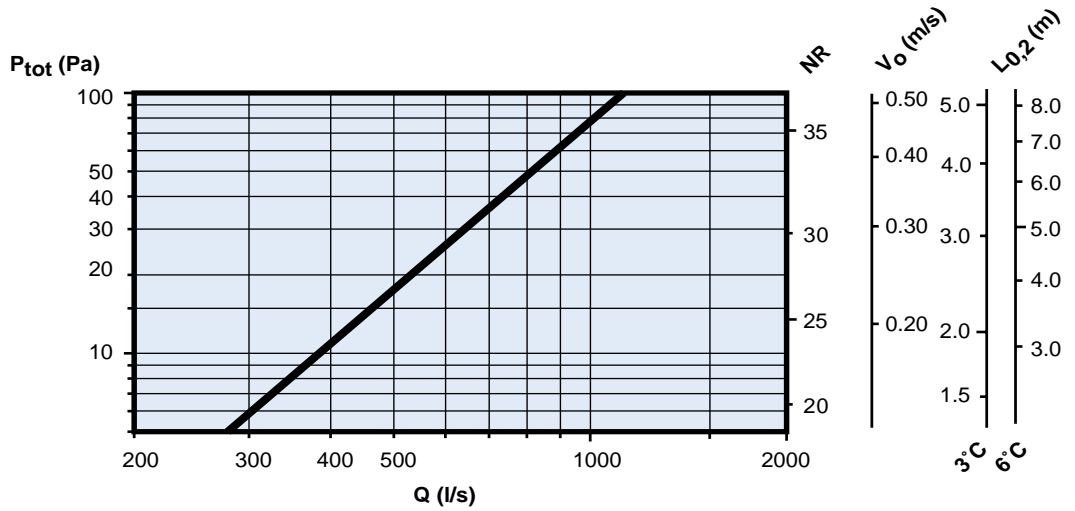
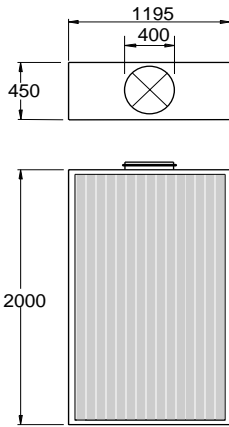
PAC 2006.315



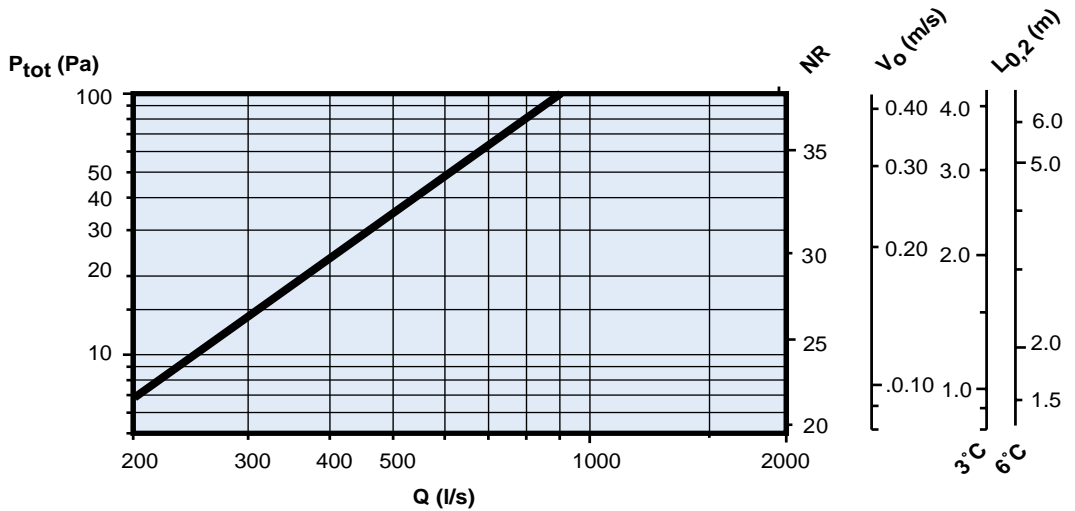
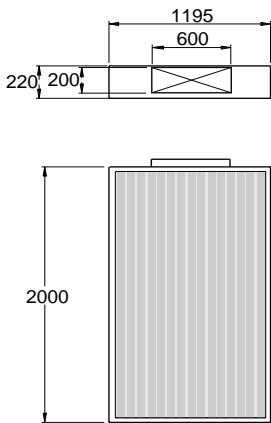
PAC 2012.315



PAC 2012.400



PAR 2012.200x600



PAR 2012.250x800

