

REPUS[®] supply air panel RAC/RBC/VRC RACC/VRCC

- Short adjacent zone.
- Stable and rigid front.
- Maintenance free.
- Test nipple for measuring air flow rate.
- Adjustable adjacent zone.



4

Function

RAC/RBC/VRC can be used in all kinds of applications. The panel provides a displacement ventilation system giving improved air quality and lower temperatures in the occupied zone than with traditional systems.

The internal REPUS[®]-nozzles provide a constant air distribution over the entire face area without risk of draught. As no filter or foam media is used in manufacture, the panel is maintenance free with no risk of clogging.

RACC/VRCC is a duct cover version of RAC and VRC with a telescopic duct enclosure.

Design

The panels are manufactured from galvanised sheet steel.

Front thickness 1.0 mm.

Standard finish is white (RAL9010)

Test nipple for checking the air flow

Accessories

Duct cover plates.

Size RACC/VRCC1010 - 4015 are the panels integrated in the cover. See installation.

Size RAC 5020 are supplied with a cover plate to be mounted on top of the panel.

Top plate to RAC and VRC in laminated wood or 3 mm painted steel plate.

Base

Attenuator

Applications

This type of panel which delivers up to 1000 l/s may be used in sedentary as well as industrial areas.

Specials

Stainless steel.

Other RAL colours.

Alternative sizes.

Reinforced front.

The REPUS[®] design system has been used to build special units for many years and hundreds of successful installations have been carried out. We have developed the method to quickly and accurately calculate all necessary data for specials.

Please contact us for more information.

REPUS[®] supply air panel RAC/RBC/VRC RACC/VRCC

Technical data

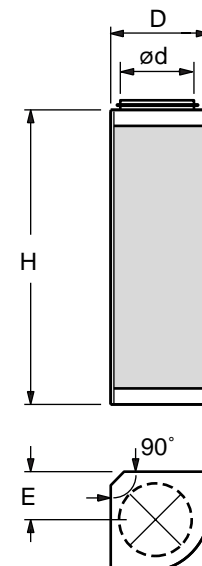
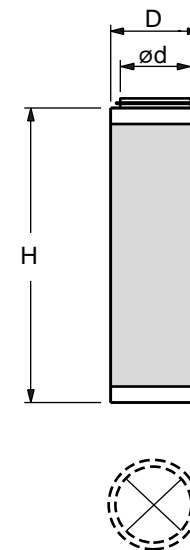
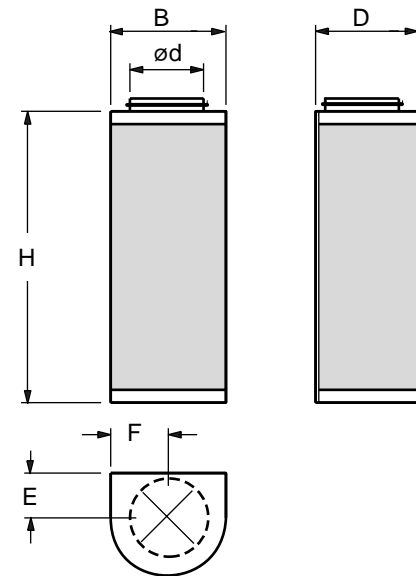
Pressure drops, sound data and adjacent zone are given in the diagrams. Sound levels are shown at 10m² Sabine.

Dimensions and weights

| Size | ø d | H | B | D | E | F | kg |
|----------|-----|------|-----|-----|-----|-----|----|
| RAC 1006 | 100 | 600 | 315 | 158 | 70 | 158 | 6 |
| RAC 1206 | 125 | 600 | 315 | 158 | 83 | 158 | 6 |
| RAC 1606 | 160 | 600 | 400 | 200 | 100 | 200 | 8 |
| RAC 2010 | 200 | 1000 | 350 | 300 | 120 | 175 | 13 |
| RAC 2510 | 250 | 1000 | 400 | 350 | 145 | 200 | 15 |
| RAC 3110 | 315 | 1000 | 500 | 450 | 178 | 250 | 18 |
| RAC 3115 | 315 | 1500 | 500 | 450 | 178 | 250 | 25 |
| RAC 4015 | 400 | 1480 | 600 | 600 | 255 | 300 | 33 |
| RAC 4020 | 400 | 2000 | 600 | 600 | 255 | 300 | 45 |
| RAC 5020 | 500 | 2000 | 700 | 700 | 305 | 350 | 50 |

| Size | ø d | H | D | kg |
|----------|-----|------|-----|----|
| RBC 1006 | 100 | 600 | 125 | 4 |
| RBC 1206 | 125 | 600 | 160 | 5 |
| RBC 1606 | 160 | 600 | 200 | 8 |
| RBC 2010 | 200 | 1000 | 250 | 9 |
| RBC 2510 | 250 | 1000 | 315 | 13 |
| RBC 3110 | 315 | 1000 | 400 | 20 |
| RBC 3115 | 315 | 1500 | 400 | 26 |
| RBC 4015 | 400 | 1500 | 500 | 32 |
| RBC 4020 | 400 | 2000 | 500 | 45 |
| RBC 5020 | 500 | 2000 | 630 | 60 |

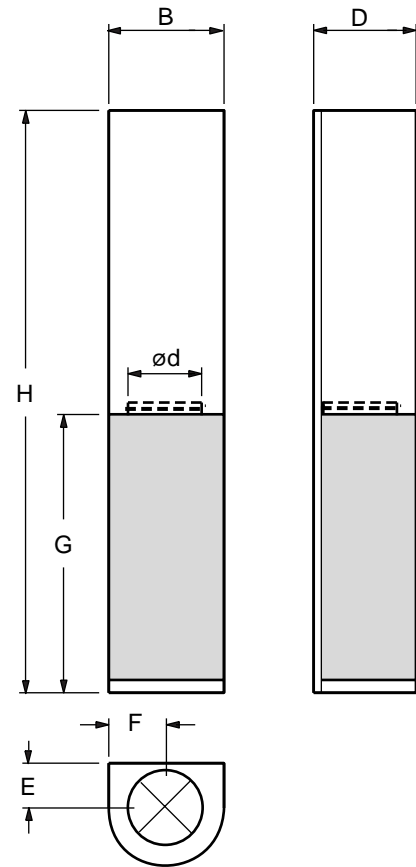
| Size | ø d | H | D | E | kg |
|----------|-----|------|-----|-----|----|
| VRC 1006 | 100 | 600 | 190 | 72 | 5 |
| VRC 1206 | 125 | 600 | 190 | 83 | 5 |
| VRC 1606 | 160 | 600 | 225 | 105 | 7 |
| VRC 2010 | 200 | 1000 | 300 | 125 | 10 |
| VRC 2510 | 250 | 1000 | 340 | 150 | 15 |
| VRC 3115 | 315 | 1500 | 450 | 180 | 20 |



Dimensions and weights

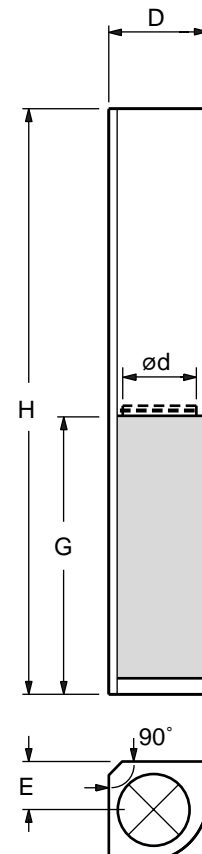
| Size | ∅ d | H | B | D | G | E | F | kg* |
|-----------|-----|------|-----|-----|------|-----|-----|-----|
| RACC 1006 | 100 | 2000 | 315 | 158 | 578 | 70 | 158 | 15 |
| RACC 1206 | 125 | 2000 | 315 | 158 | 578 | 83 | 158 | 15 |
| RACC 1606 | 160 | 2000 | 400 | 200 | 578 | 100 | 200 | 17 |
| RACC 2010 | 200 | 2000 | 350 | 300 | 980 | 120 | 175 | 28 |
| RACC 2510 | 250 | 2000 | 400 | 350 | 980 | 145 | 200 | 30 |
| RACC 3110 | 315 | 2000 | 500 | 450 | 980 | 178 | 250 | 40 |
| RACC 3115 | 315 | 2500 | 500 | 450 | 1478 | 178 | 250 | 45 |

*Weight includes for upper cover plate (max. height 3,0m)



| Size | ∅ d | H | D | G | E | kg* |
|-----------|-----|------|-----|------|-----|-----|
| VRCC 1006 | 100 | 2000 | 190 | 578 | 72 | 12 |
| VRCC 1206 | 125 | 2000 | 190 | 578 | 83 | 12 |
| VRCC 1606 | 160 | 2000 | 225 | 578 | 105 | 14 |
| VRCC 2010 | 200 | 2000 | 300 | 980 | 125 | 22 |
| VRCC 2510 | 250 | 2000 | 340 | 980 | 150 | 27 |
| VRCC 3115 | 315 | 2000 | 450 | 1478 | 180 | 35 |

*Weight includes for upper cover plate (max. height 3,0m)



REPUS[®] supply air panel RAC/RBC/VRC RACC/VRCC

Product code

aaabbbb.ccc

Type
 RAC = Half round
 RBC = Circular
 VRC = Quarter round

Size
 1006, 1206, 1606, 2010, 2510,
 3110, 3115, 4015, 4020, 5020

Spigot size in mm
 100, 125, 160, 200, 250, 315, 400, 500

aaabbbb.ccc

Duct cover version
 RACC = Half round
 VRCC = Quarter round

Size
 1006, 1206, 1606, 2010, 2510,
 3110, 3115

Spigot size in mm
 100, 125, 160, 200, 250, 31

Accessories

aaaa.bb.ccc

Duct cover plate
 RACC, RBCC, VRCC

Size
 10, 12, 16, 20, 25, 31, 40, 50

Height in mm

aaaa.bb

Base 100 mm
 RACB, RBCB, VRCB

Size
 10, 12, 16, 20, 25, 31, 40, 50

TUAaa-bbb

Attenuator

Length
 06 = 600 mm, 12 = 1200 mm

Size
 100, 125, 160, 200, 250, 315

Descriptive text

REPUS[®] supply air panel, type..... The panel must be equipped with REPUS[®] nozzle for internal air distribution.
 Material: Galvanised sheet steel
 Paint: White (RAL9010)
 Accessories:

Maintenance

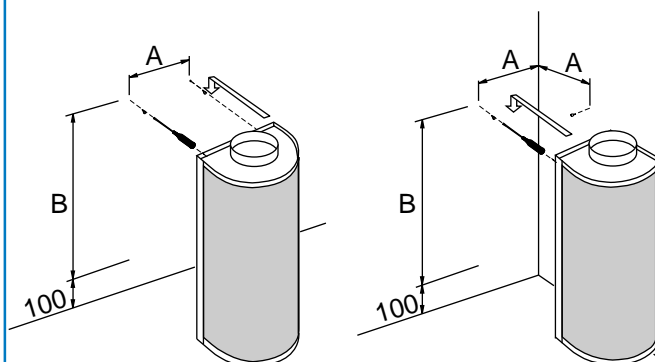
The panel is designed for ease of maintenance. The front is removable if cleaning is necessary. To clean the panel use a damp cloth with a mild detergent.

Installing RAC/VRC

The panels are suited for wall or corner mounting.

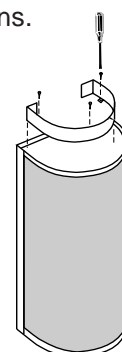
Keyholes on the rear face provide simple concealed installation. Mark the keyhole position, install round head screws and position the panel onto them.

| Storlek | A | B | Storlek | A | B |
|----------|-----|------|----------|-----|------|
| RAC 1006 | 289 | 490 | VRC 1006 | 177 | 490 |
| RAC 1206 | 289 | 490 | VRC 1206 | 177 | 490 |
| RAC 1606 | 374 | 490 | VRC 1606 | 212 | 490 |
| RAC 2010 | 324 | 890 | VRC 2010 | 287 | 890 |
| RAC 2510 | 374 | 890 | VRC 2510 | 327 | 890 |
| RAC 3110 | 474 | 890 | VRC 3115 | 437 | 1390 |
| RAC 3115 | 474 | 1390 | | | |
| RAC 4015 | 574 | 1370 | | | |
| RAC 4020 | 574 | 1890 | | | |
| RAC 5020 | 674 | 1890 | | | |



The base accessory is made in two designs.

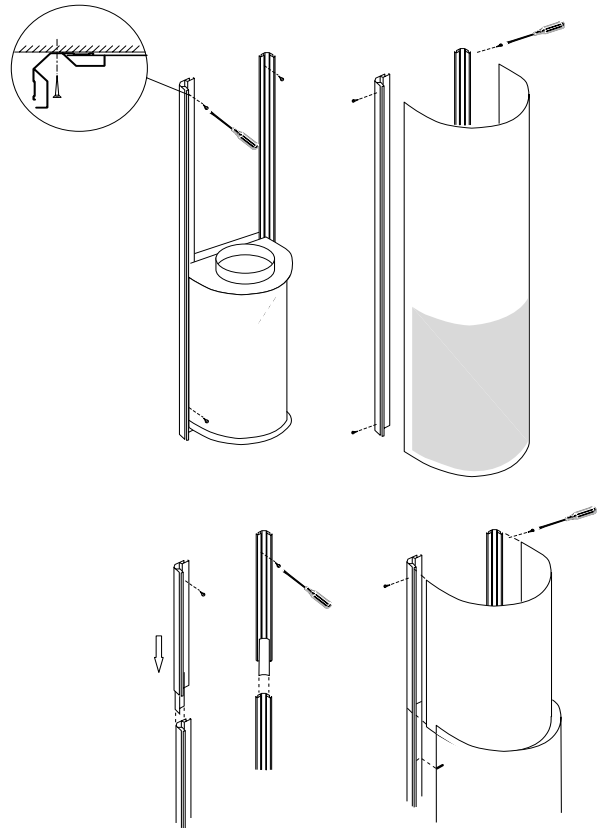
1. For top connection, the base is fitted to the panel before the panel is mounted
2. For bottom connection, fit the base to the floor. Then mount the panel holding it in position with screws or pop rivets.



Installing RACC/VRCC

Duct cover plate

1. Dismount the screws from the alu-profiles.
2. Dismount the front plats.
3. Mount the back plate on the wall 100 mm from floor.
4. Cut the two extra alu-profiles to its right length (if they are not made to measure). Put the cut edge upwards and press the profile into the back plate profile and screw to wall.
5. The top plate is firmly pressed into the profiled and fixed with one screw at the top on each side.
6. Drill a hole Ø12 in the top plate and assemble the supplied plastic nipple in the hole. Connect the hose from the test nipple at the spigot
- 7.. The front is pressed firmly so it overlaps the top plate it is the fixed with screws on each side throught the profiles.
8. The air flow is decided by measuring the over pressure at the test nipple in the top plate. To achieve the air flow the diagram (M100M500) is used



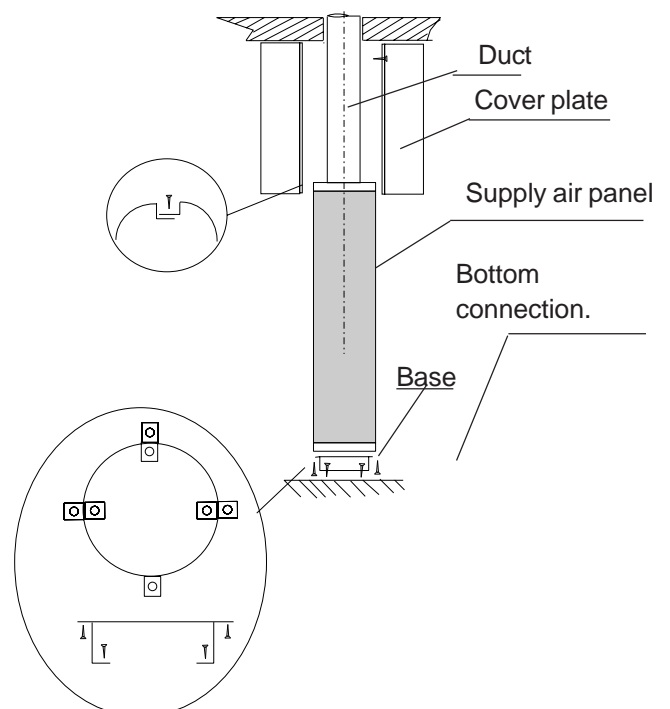
RBC

The panel is designed for floor mounting

The panel is intalled on the floor or on a base.

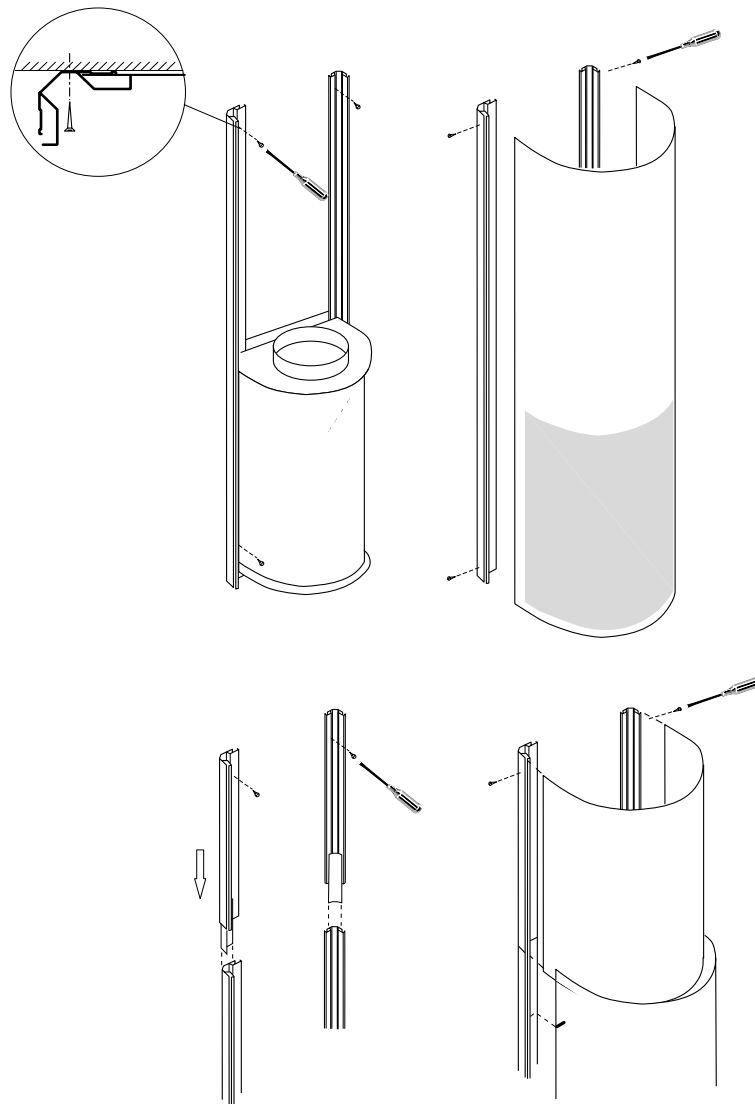
The duct is connected and the cover plate is then assembled to the terminal

RBC



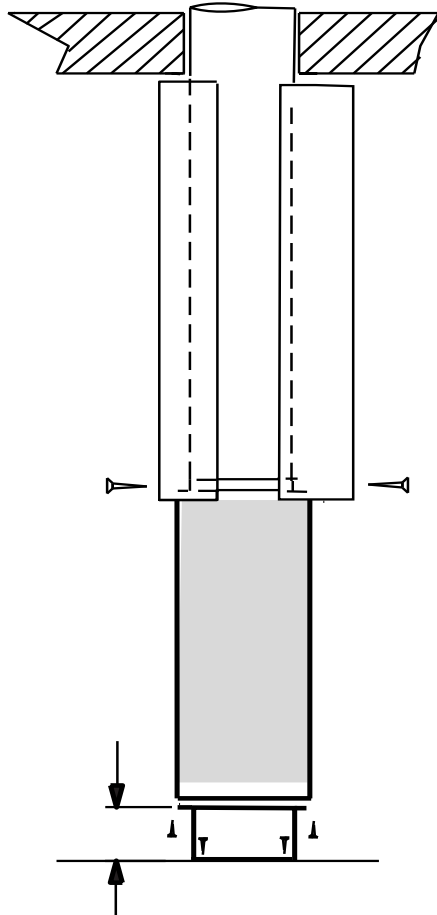
Installing RAC/VRC

Duct cover plate Connections Ø100-315



Installing RBC

Duct cover connections Ø160-500

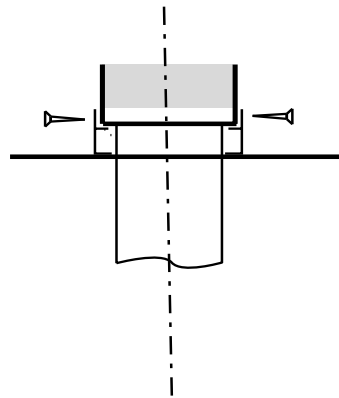


Base for RBC

Connection from above Ø100-500

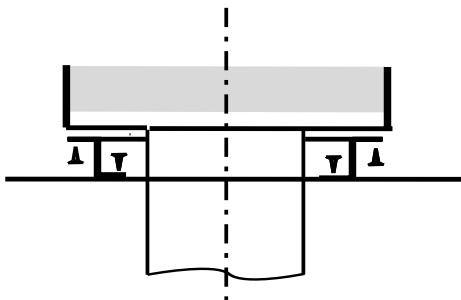
Base for RBC

Connection from below
Ø 125-250

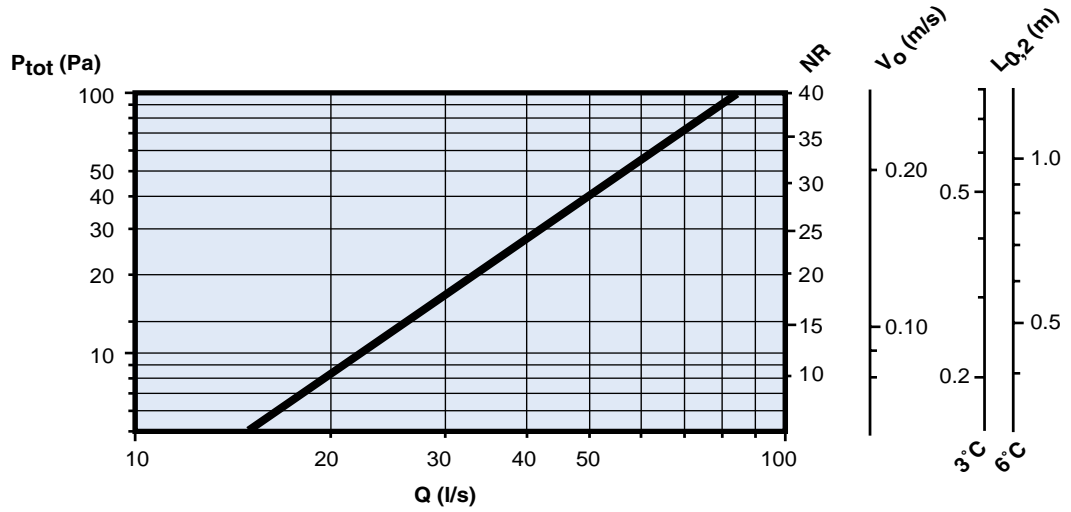
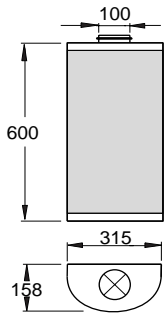


Base for RBC

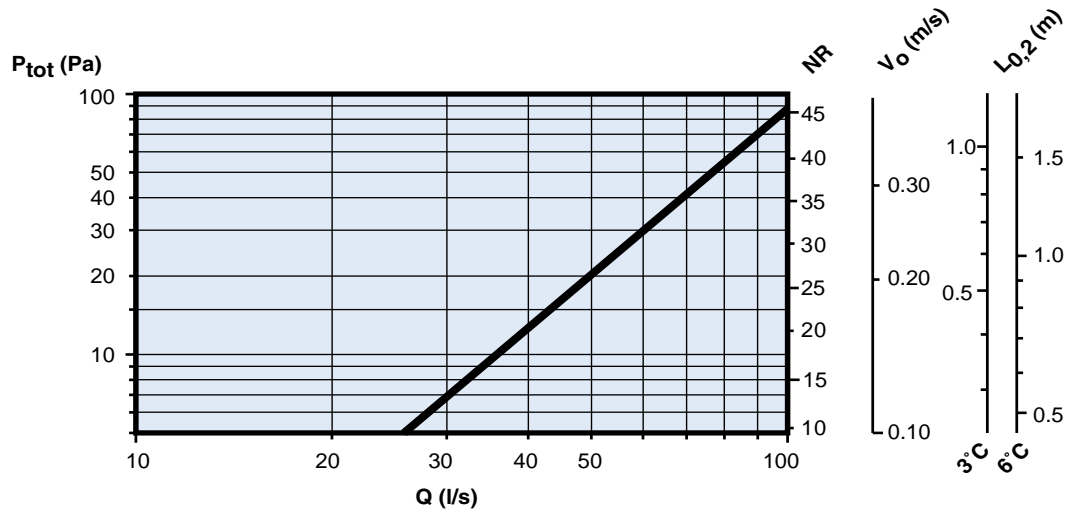
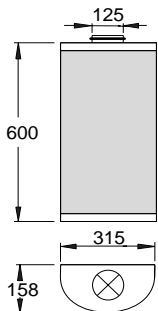
Connection from below Ø315-500



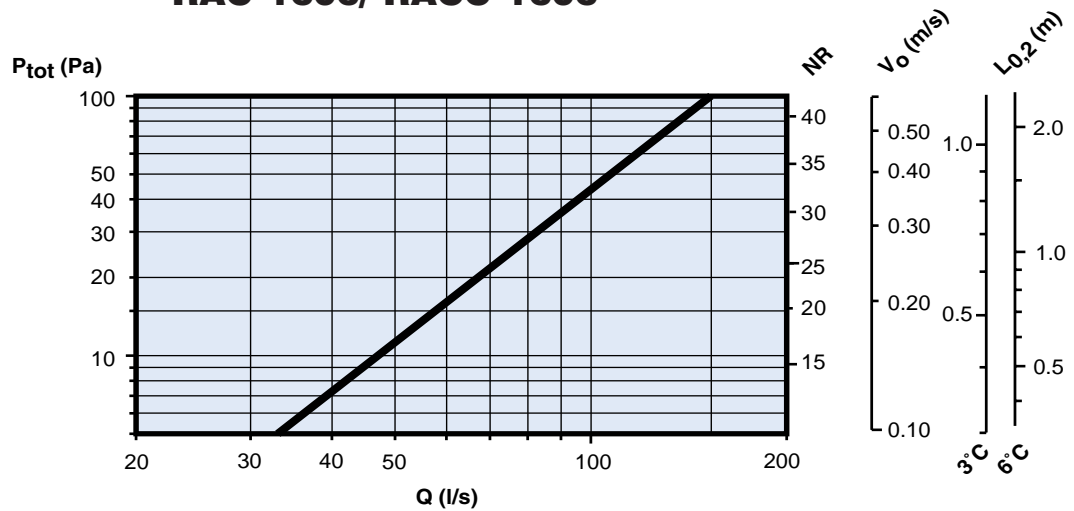
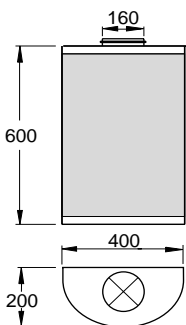
RAC 1006/RACC1006



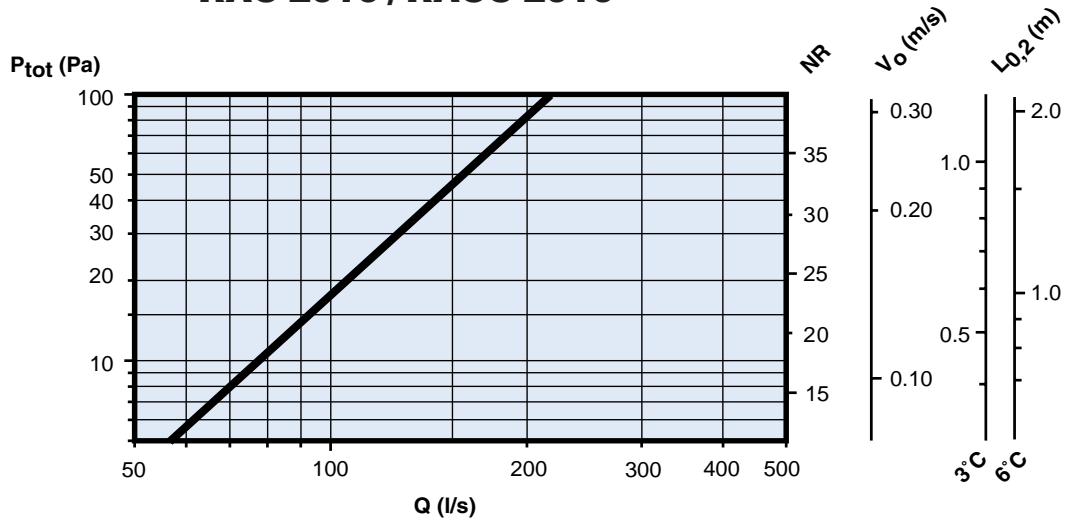
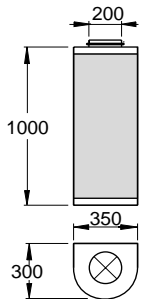
RAC 1206 / RACC 1206



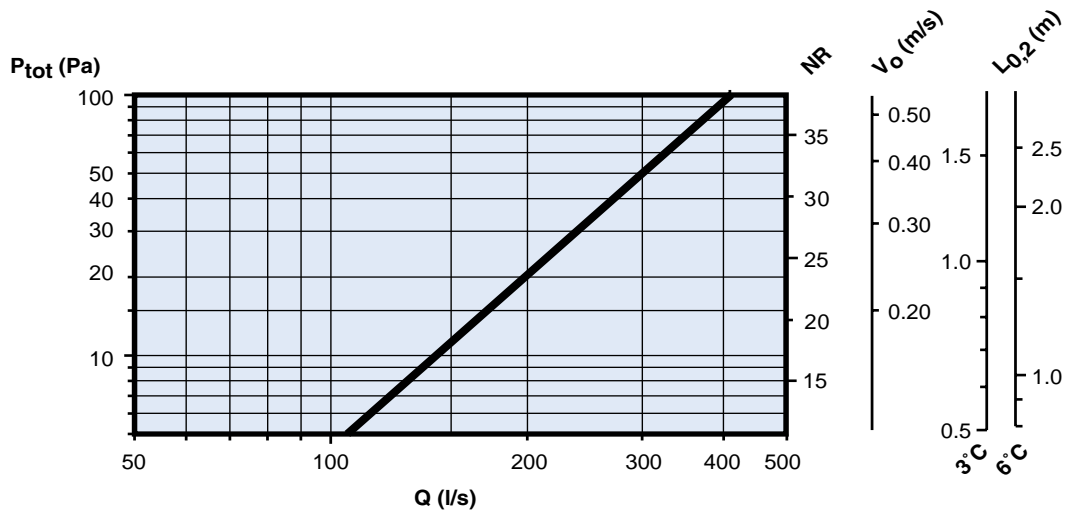
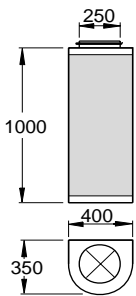
RAC 1606/ RACC 1606



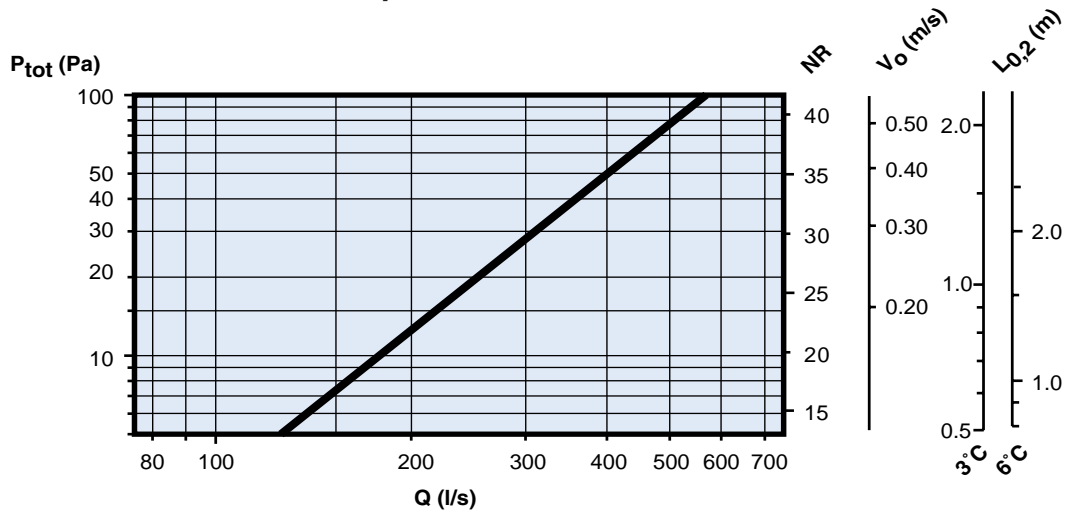
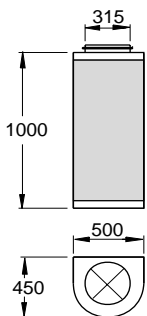
RAC 2010 / RACC 2010



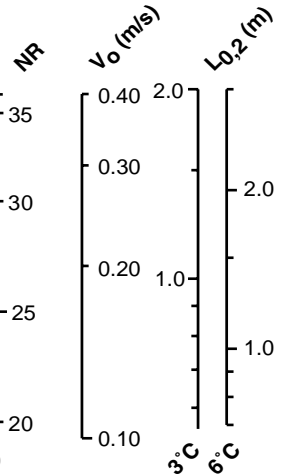
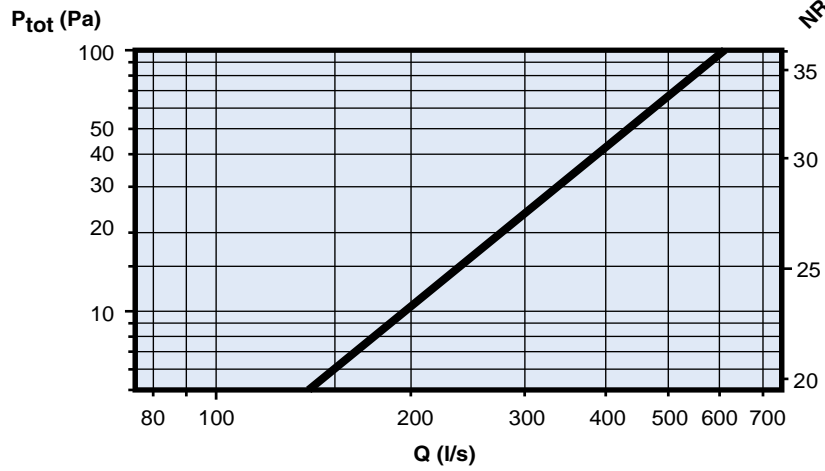
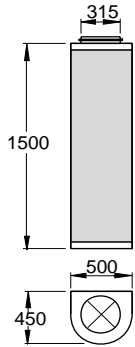
RAC 2510 / RACC 2510



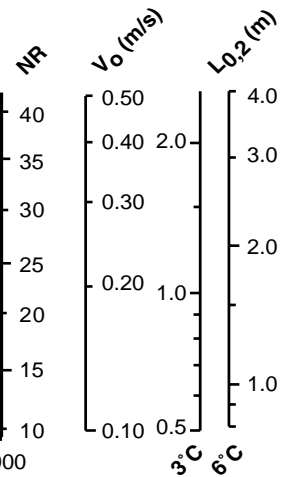
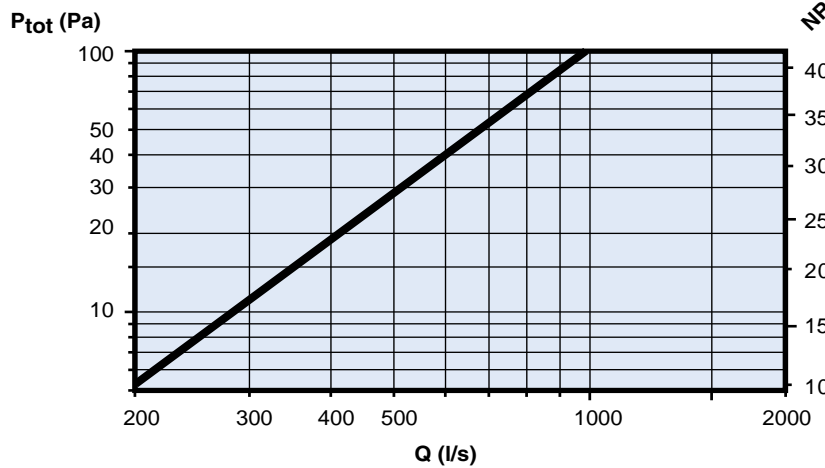
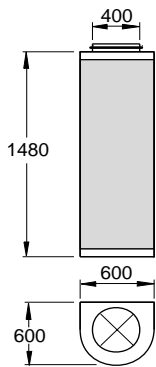
RAC 3110 / RACC 3110



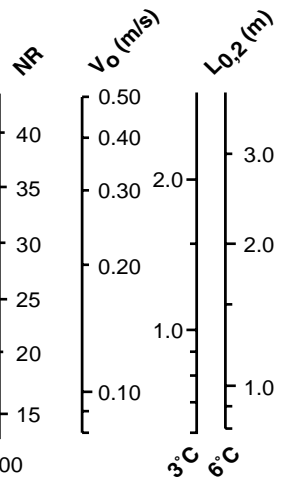
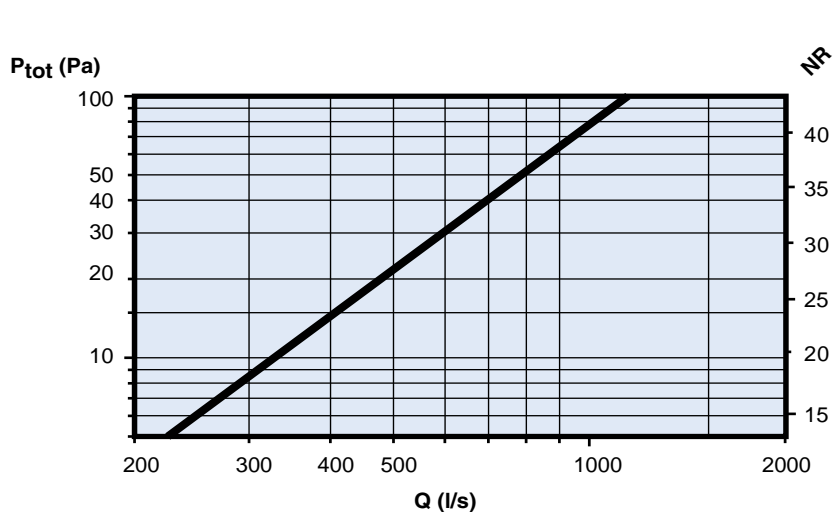
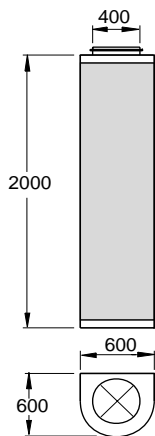
RAC 3115 / RACC 3115



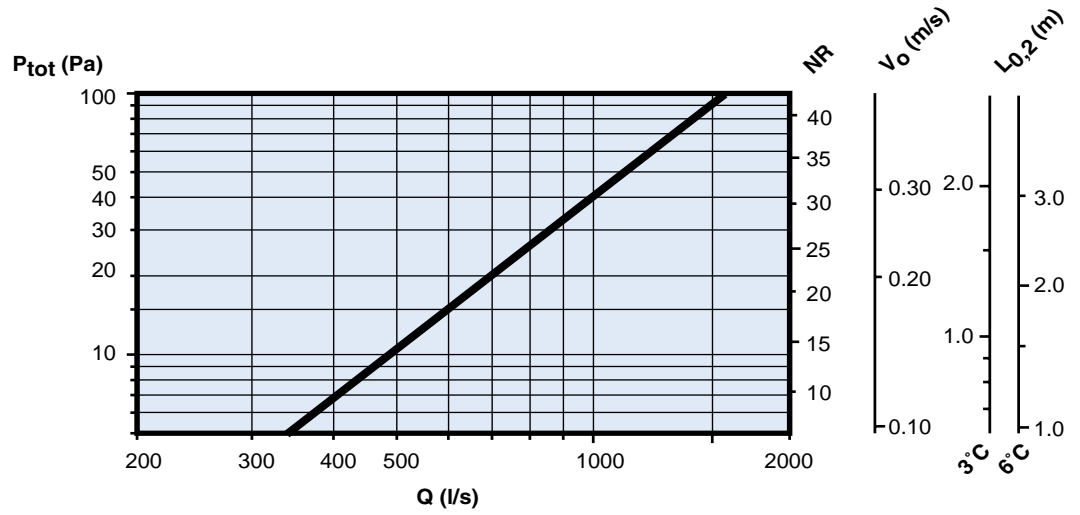
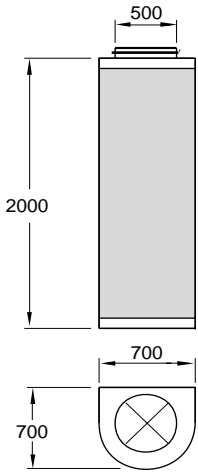
RAC 4015 / RACC 4015



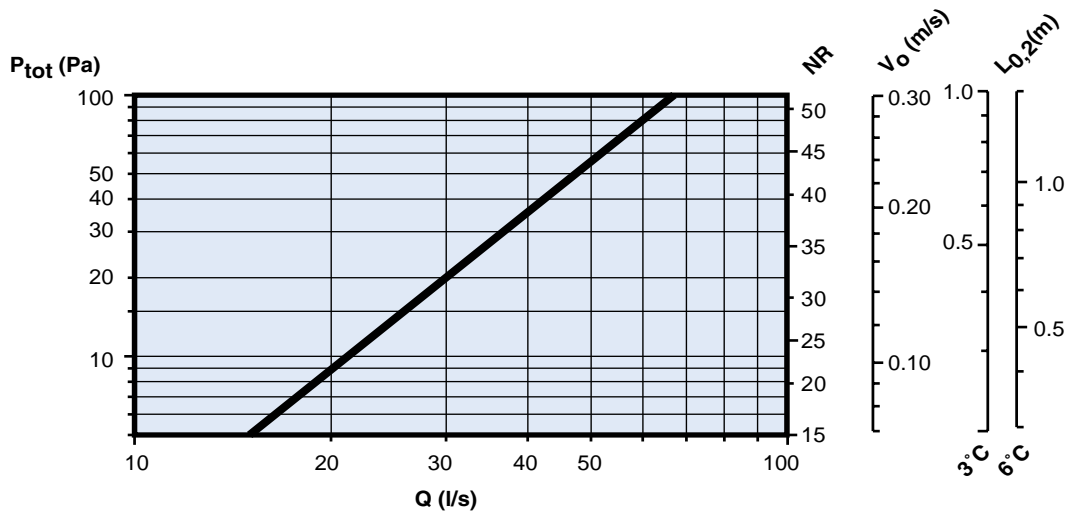
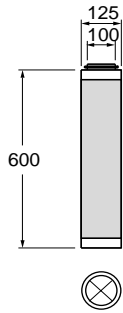
RAC 4020 / RACC 4020



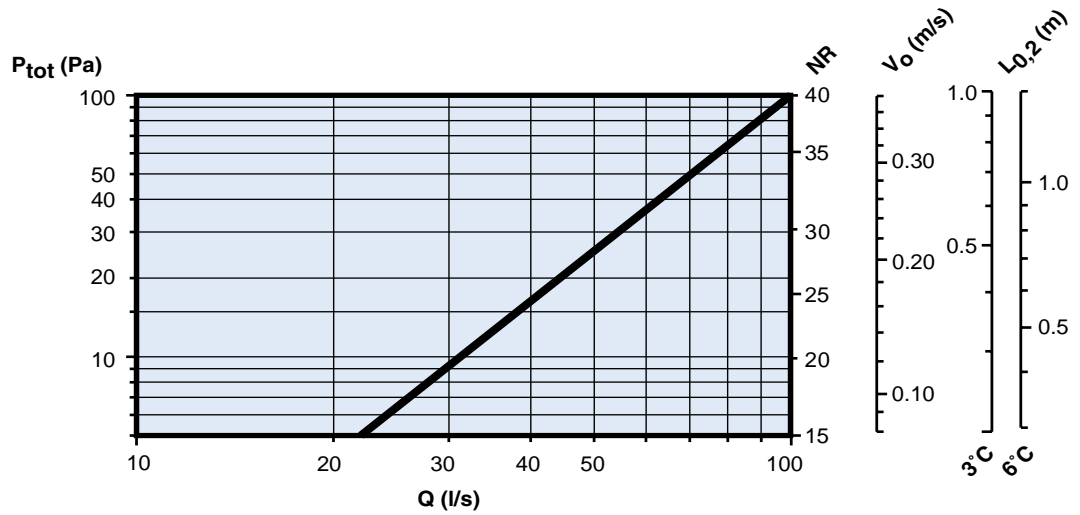
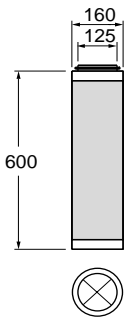
RAC 5020.500



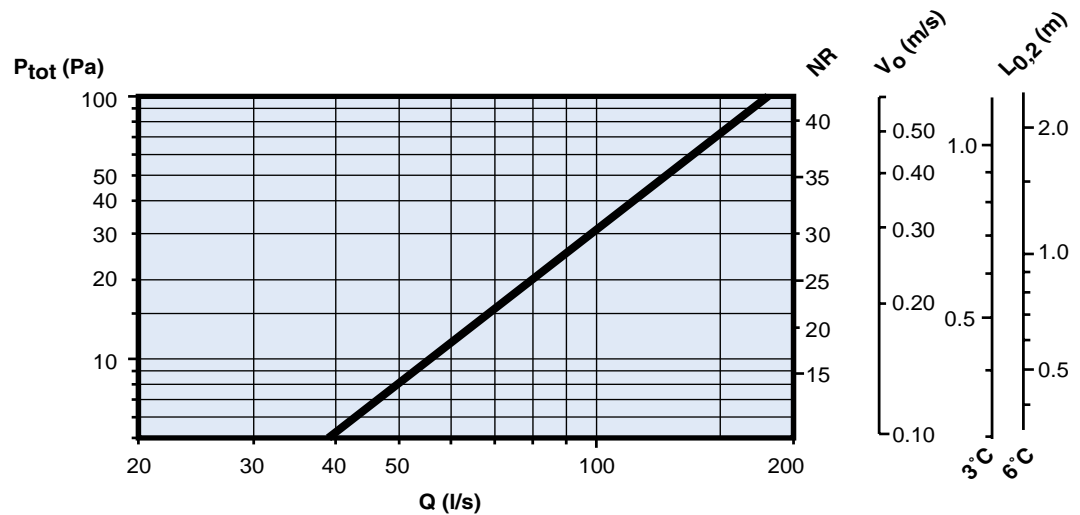
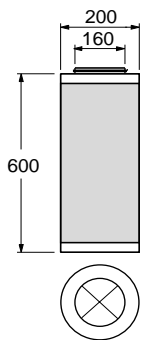
RBC 1006.100



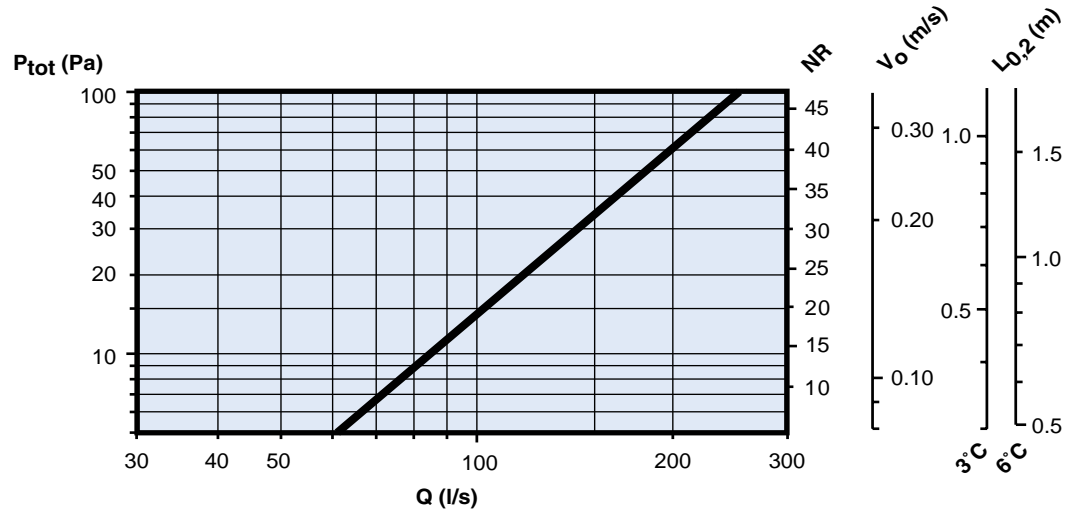
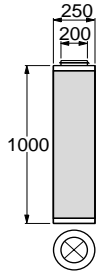
RBC 1206.125



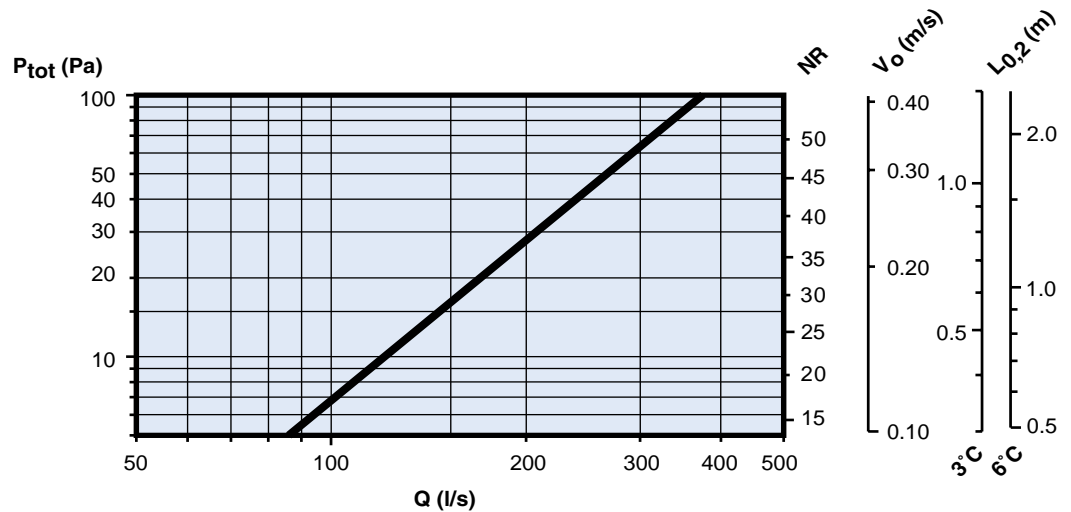
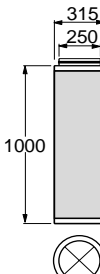
RBC 1606.160



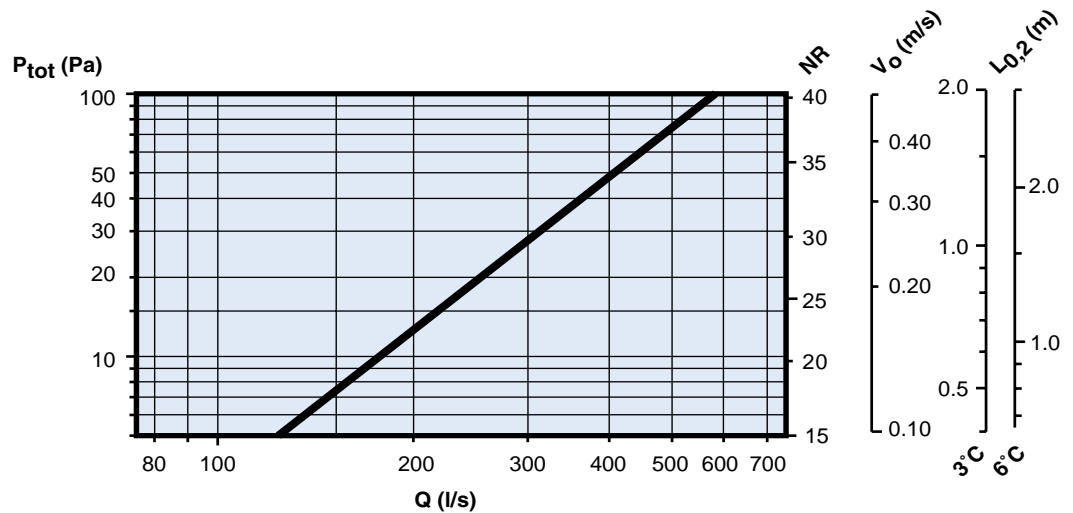
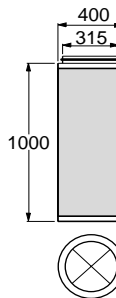
RBC 2010.200



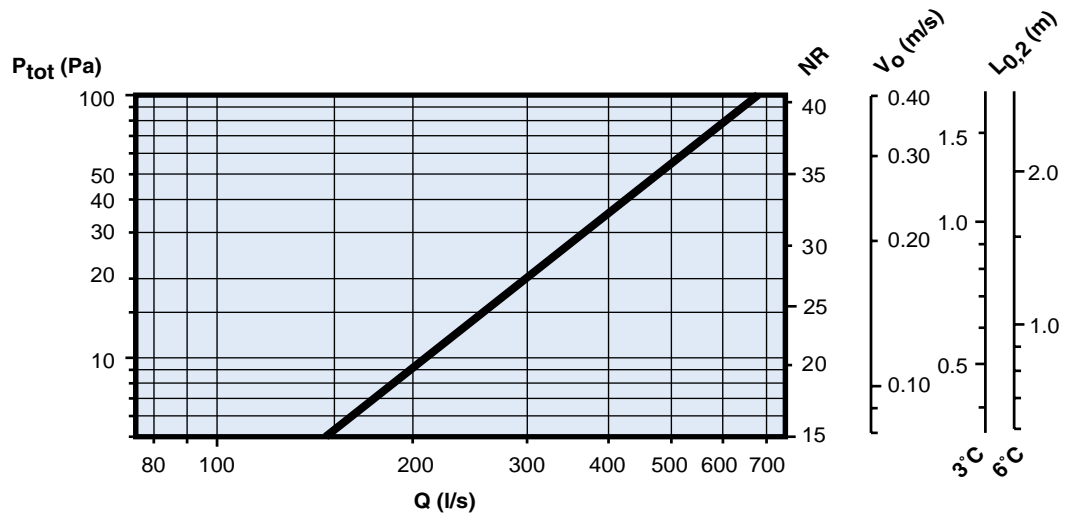
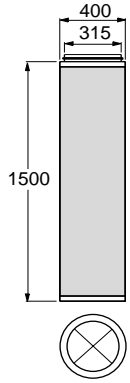
RBC 2510.250



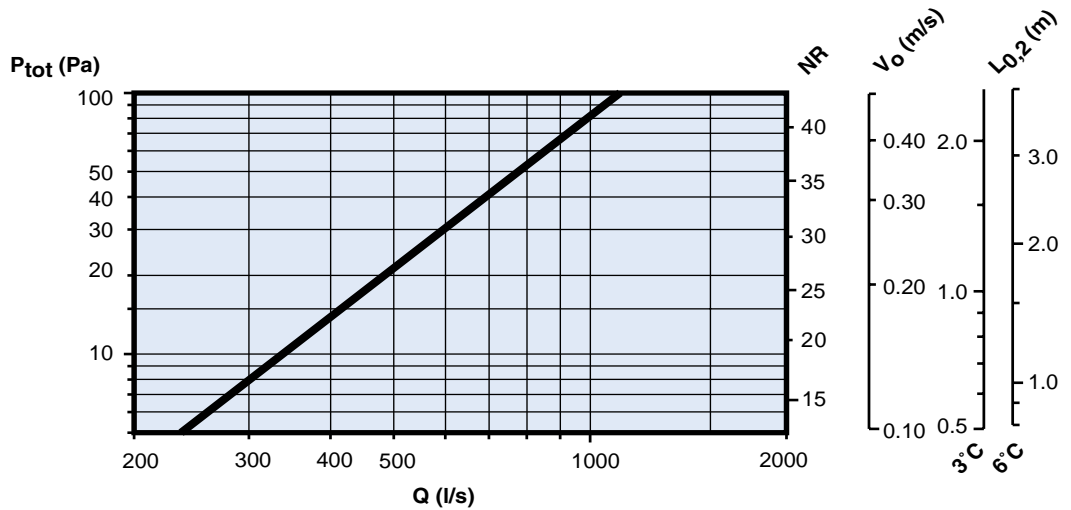
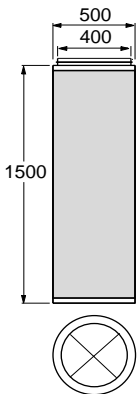
RBC 3110.315



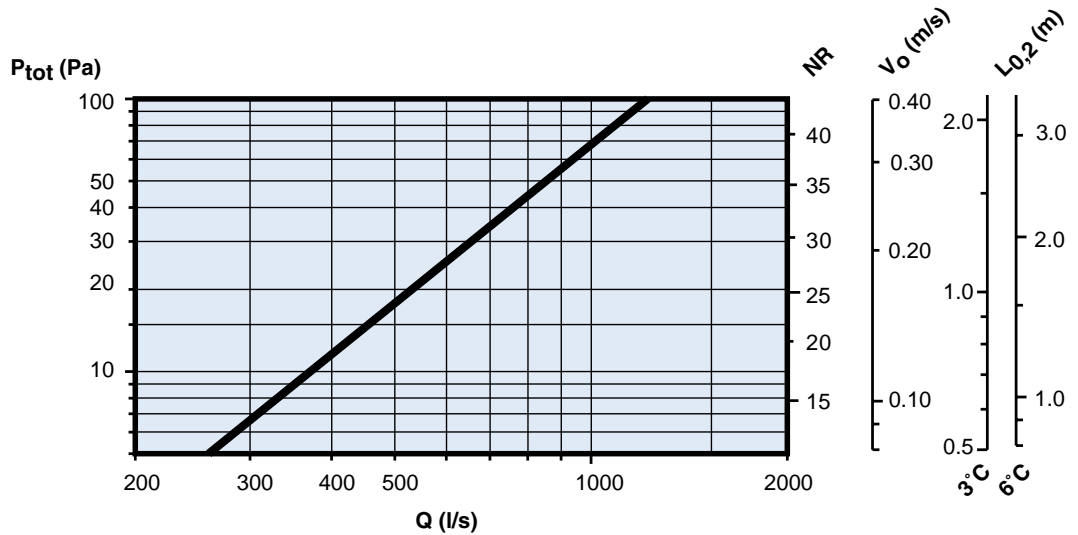
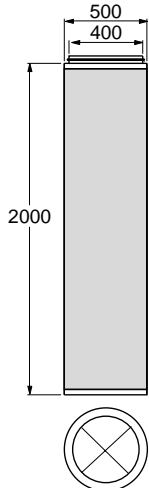
RBC3115.315



RBC4015.400

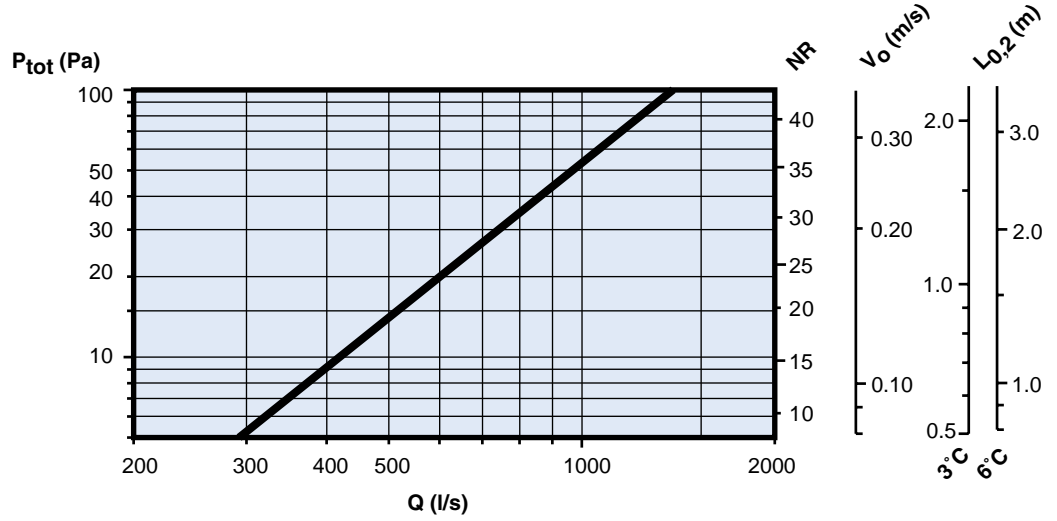
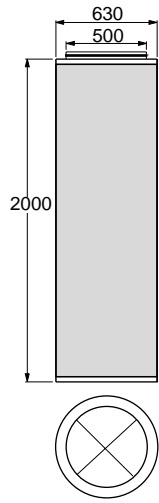


RBC 4020.400

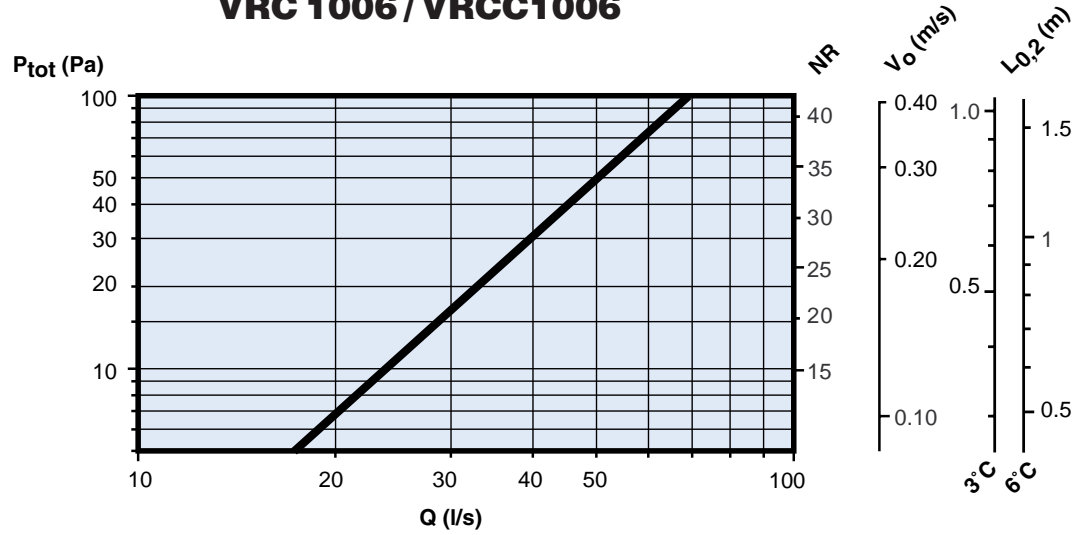
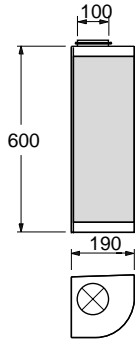


REPUS[®] supply air panel RAC/RBC/VRC RACC/VRCC

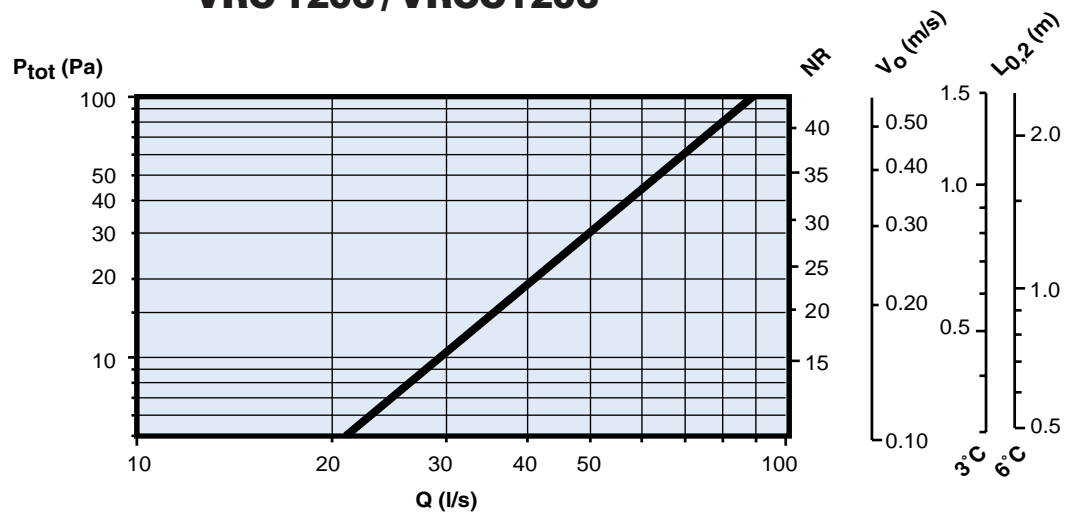
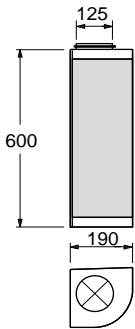
RBC 5020.500



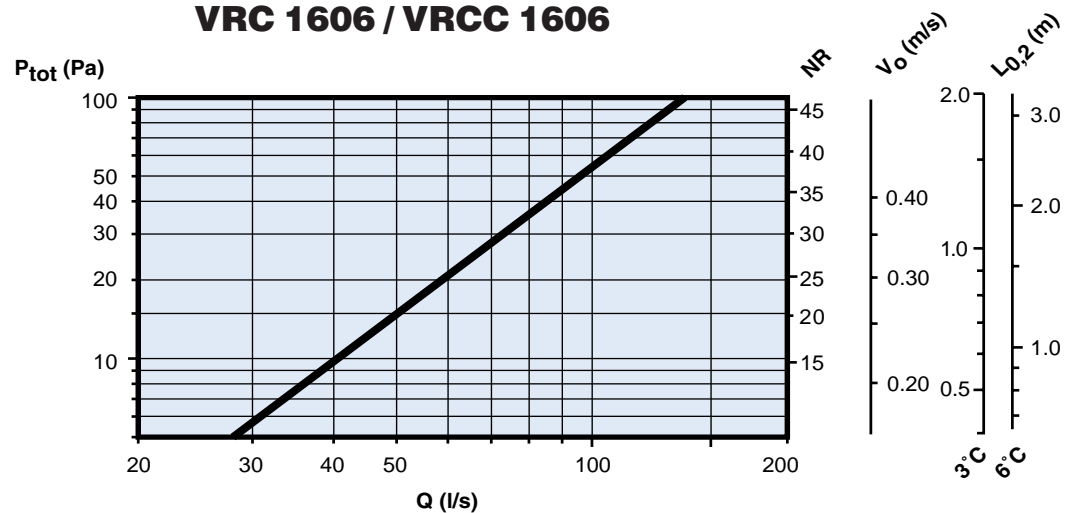
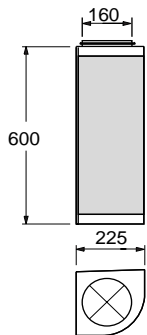
VRC 1006 / VRCC1006



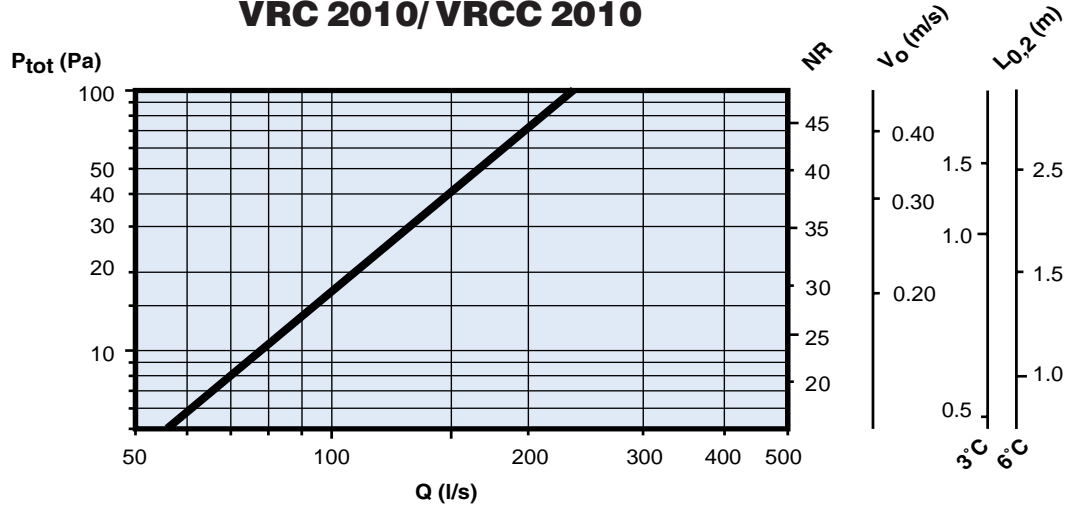
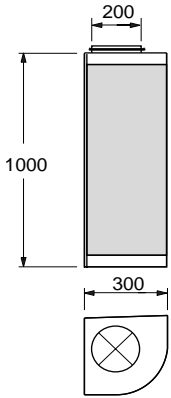
VRC 1206 / VRCC1206



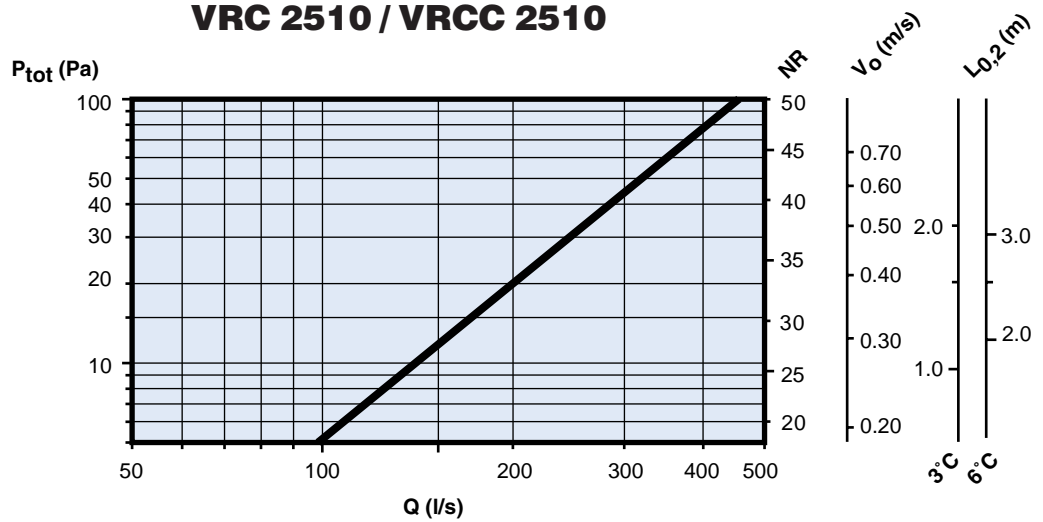
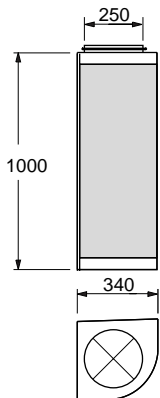
VRC 1606 / VRCC 1606



VRC 2010 / VRCC 2010



VRC 2510 / VRCC 2510



VRC 3115 / VRCC 3115

